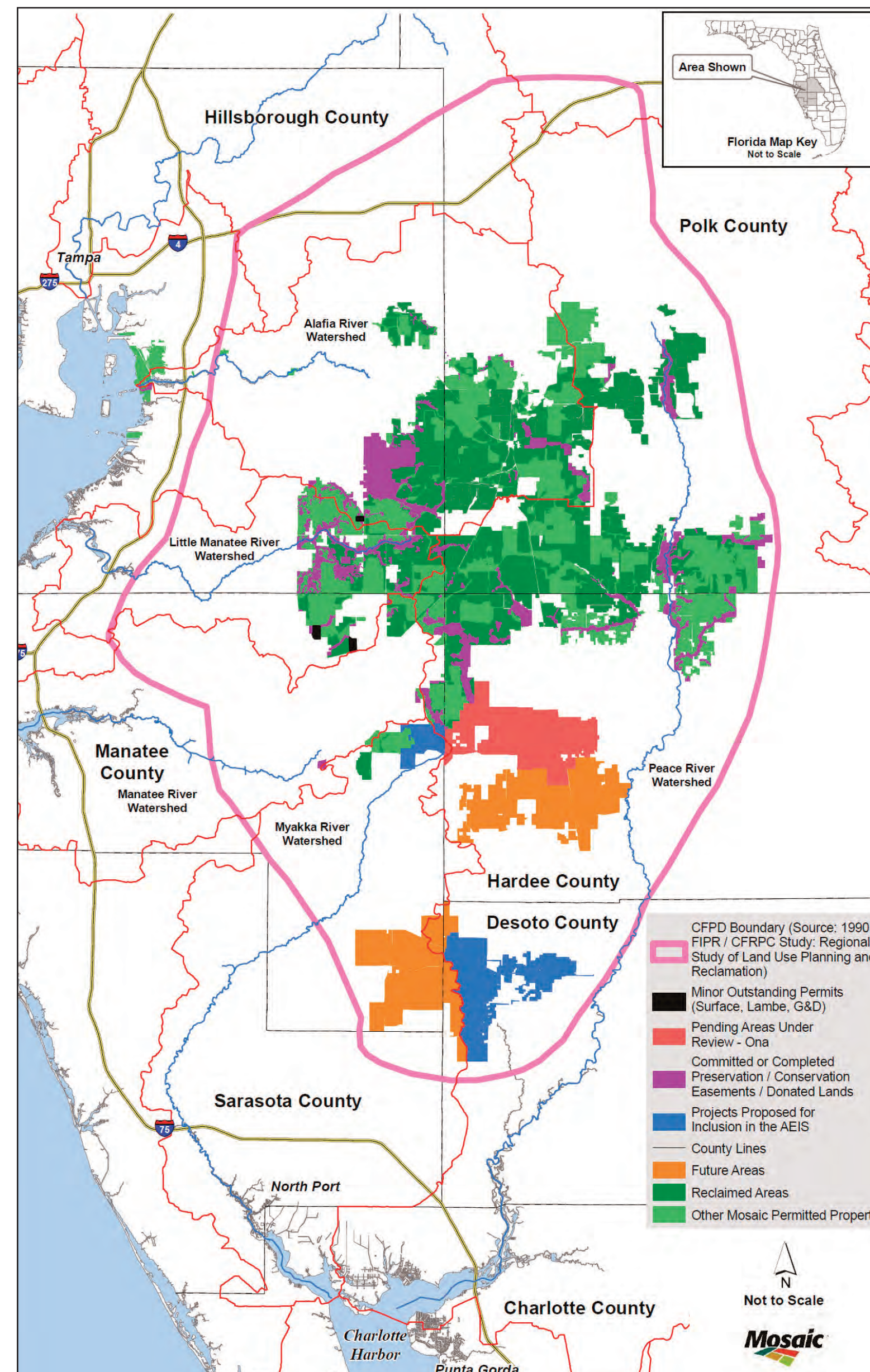


# Human Environment Economic Considerations



Photo courtesy of László Bencze/Mosaic Fertilizer, 2005

(Source: CHNEP, 2008)



Sources: Mosaic and CF Industries, 2010)

- Jobs
- Wages
- Property Tax
- Other

**Table 3-12  
Economic Components Generated by  
Phosphate Mining in Hardee County, 2000**

Total Industry Output	\$111,477,435
Employee Compensation	\$21,605,600
Proprietor's Income	\$1,221,730
Other Property Income	\$50,000,000
Indirect Business Taxes	\$5,021,382
Total Value Added	\$77,848,712
Total Employment	452

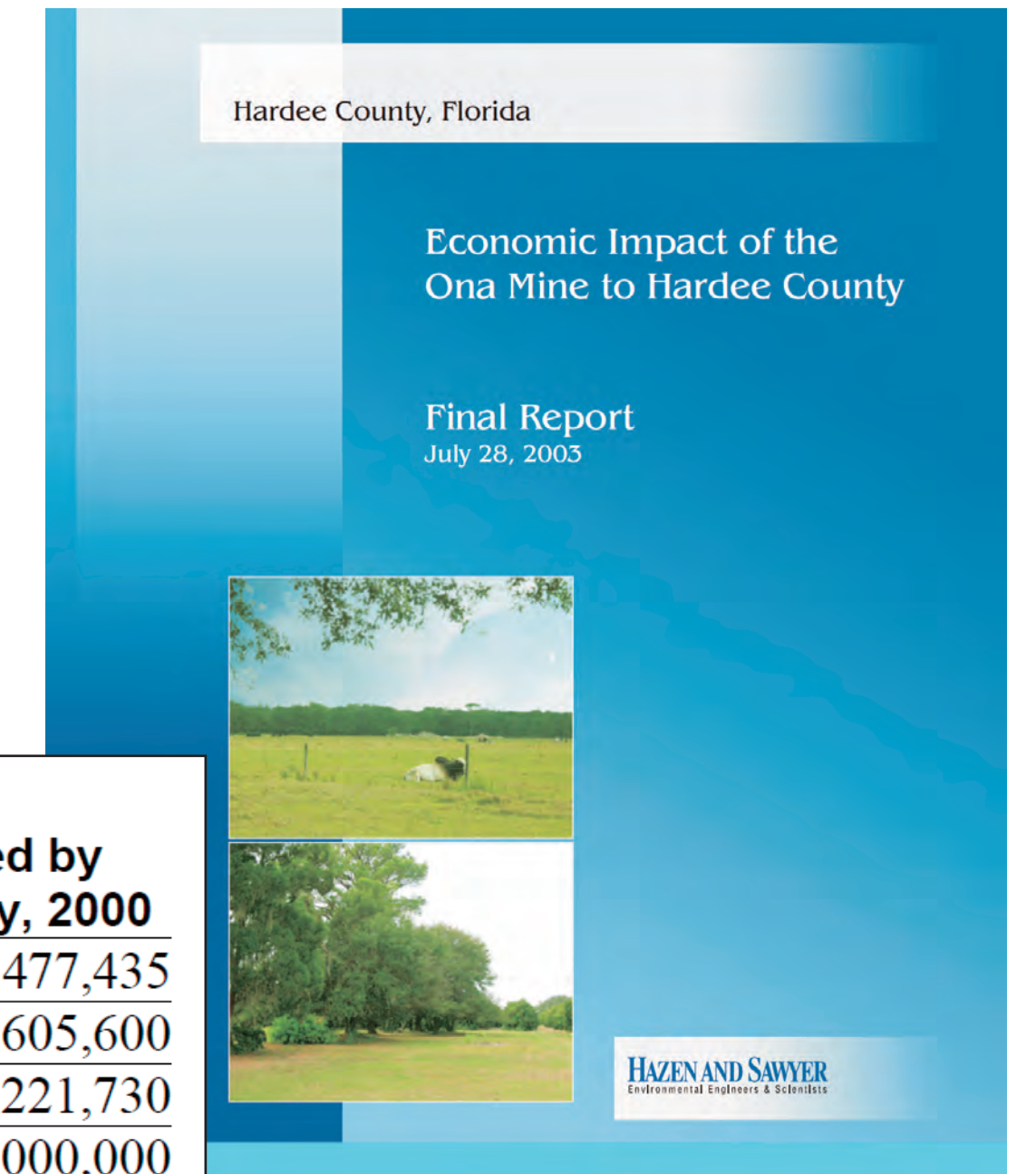


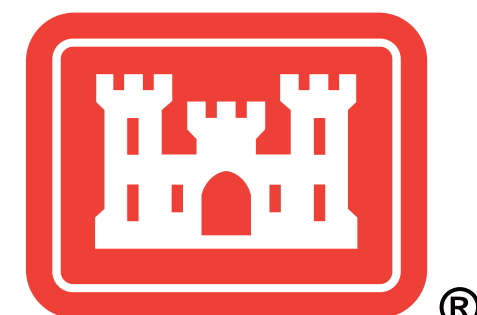
Image Source: IAN Image and Video Library



- Agricultural Operations



- Residential Development as Reclaimed Land



US Army Corps of Engineers  
**BUILDING STRONG**

Areawide Environmental Impact Statement for Continued Phosphate Mining in the Central Florida Phosphate District

**CH2MHILL.**

# Human Environment Other Land Uses

## ■ Recreation

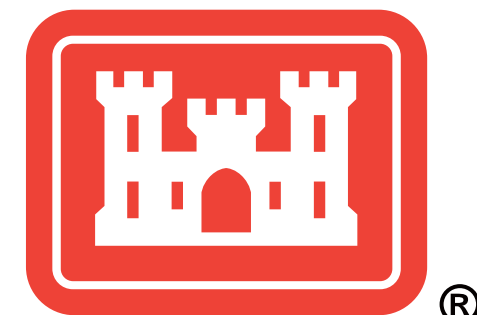
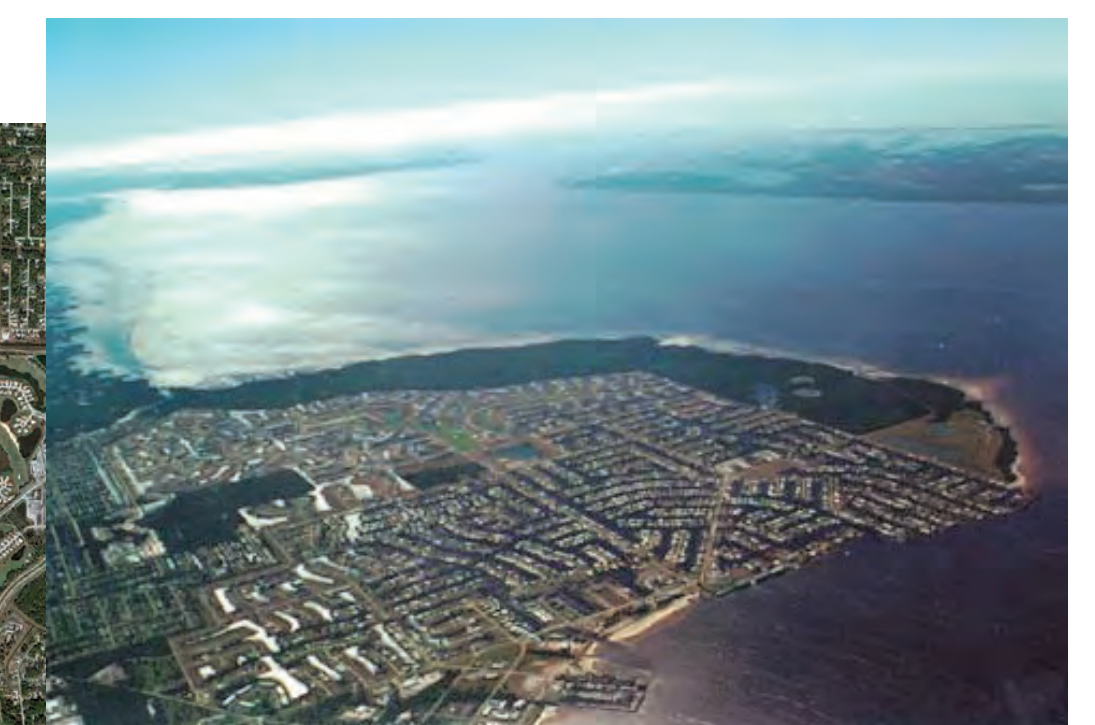
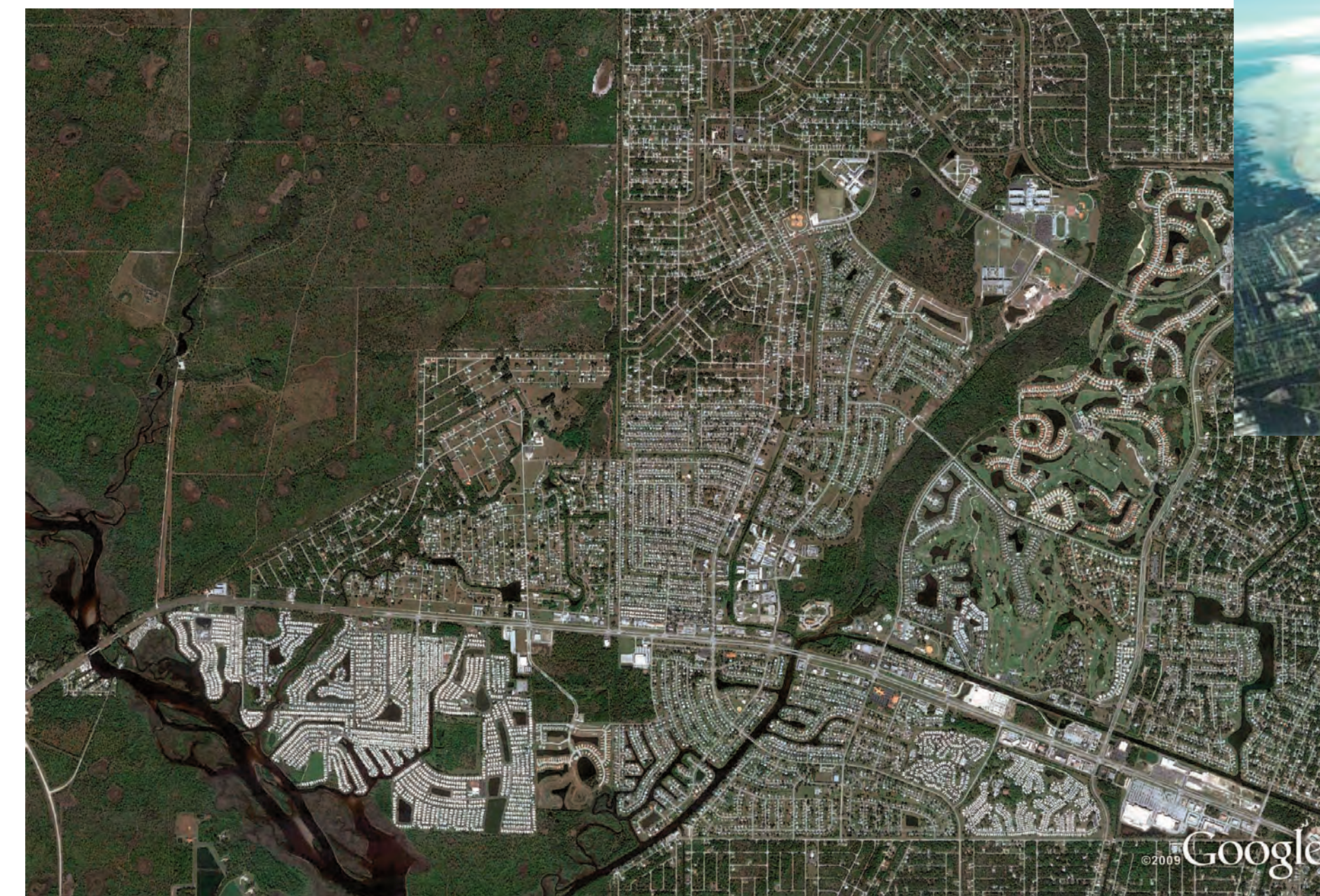


Photo images: [www.floridastateparks.org](http://www.floridastateparks.org)

## ■ Natural Systems/Preservation

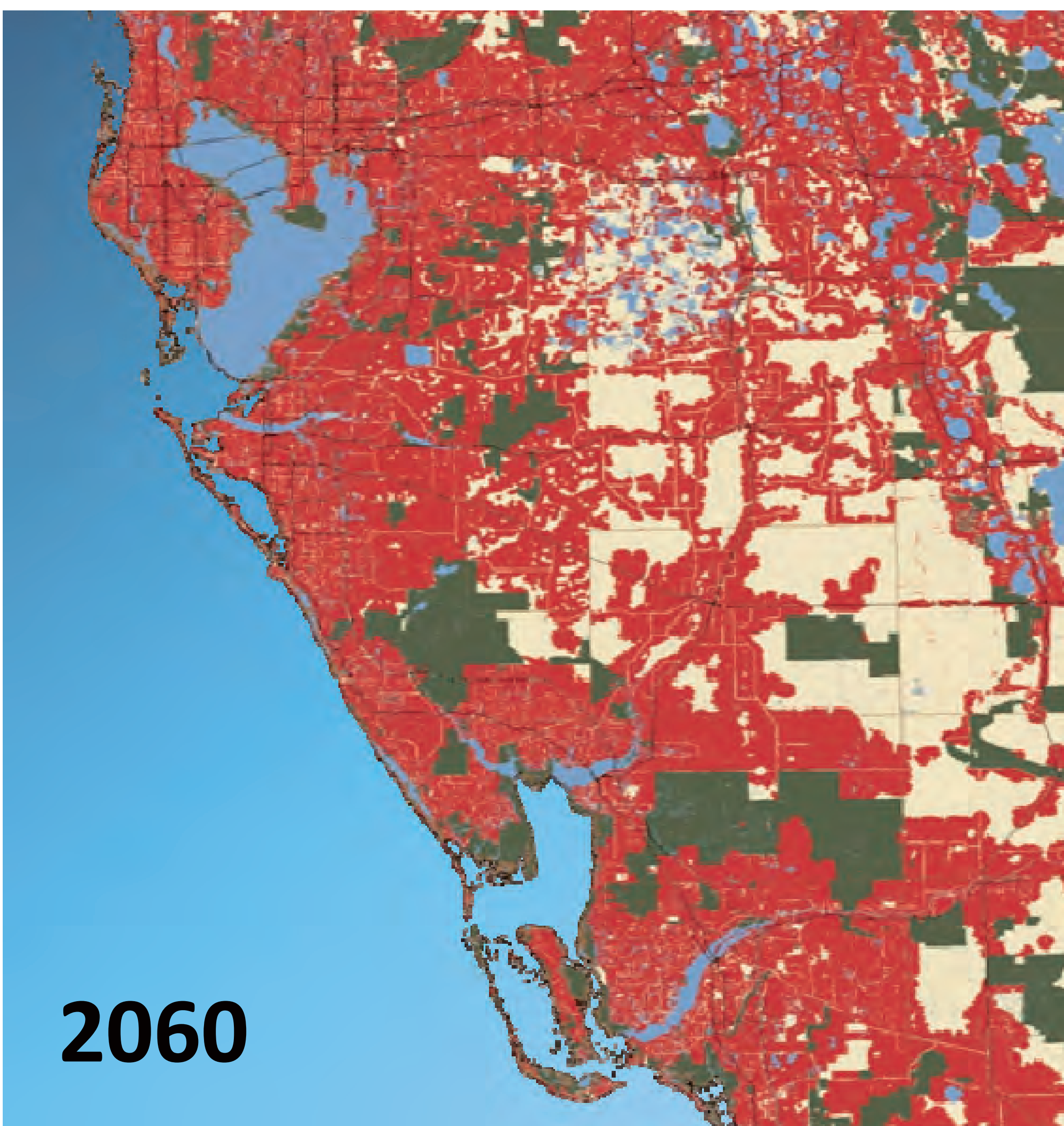
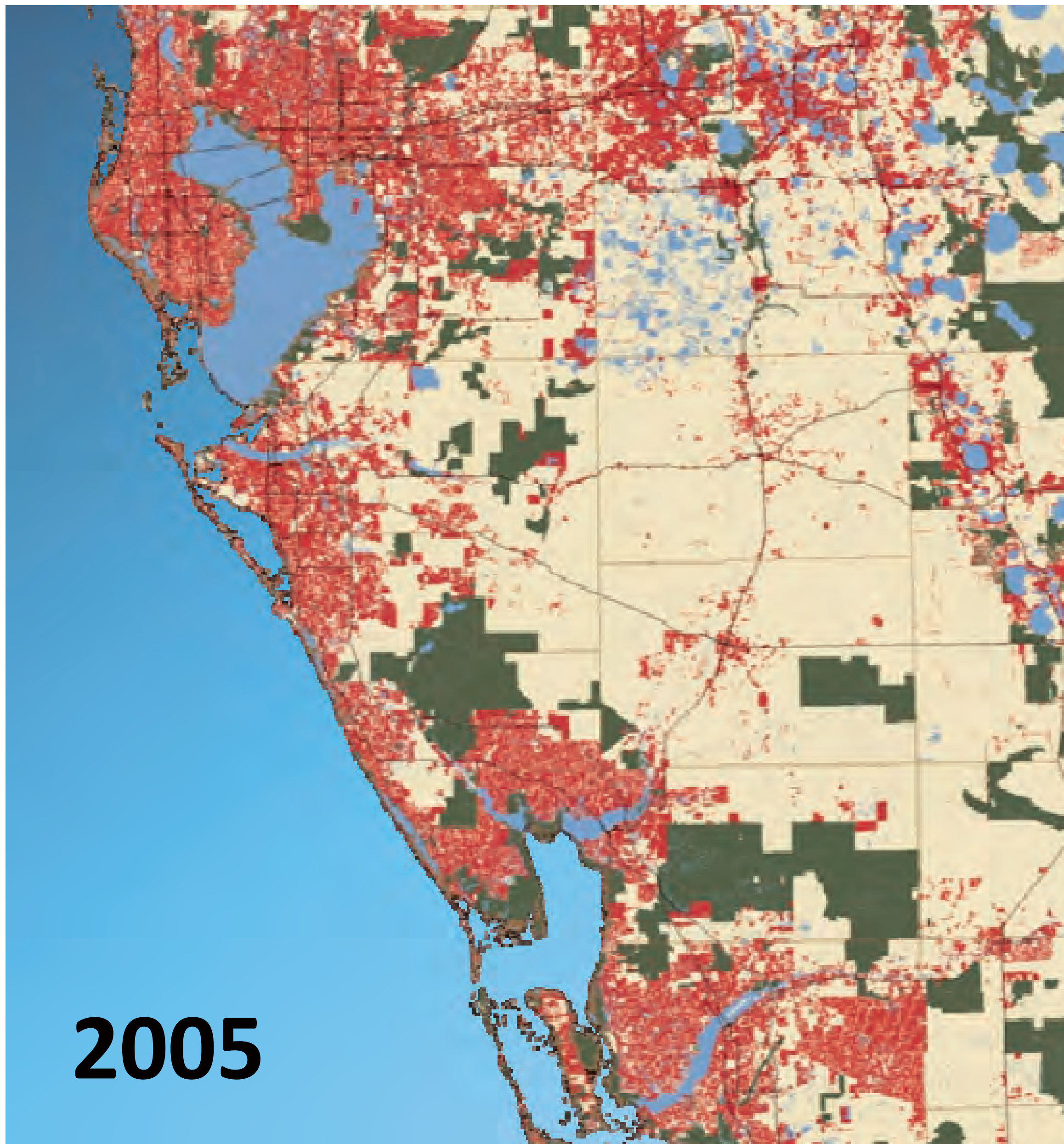


## ■ Urban Development



US Army Corps of Engineers  
**BUILDING STRONG**

# Human Environment Projected Developed vs. Conservation Land Use








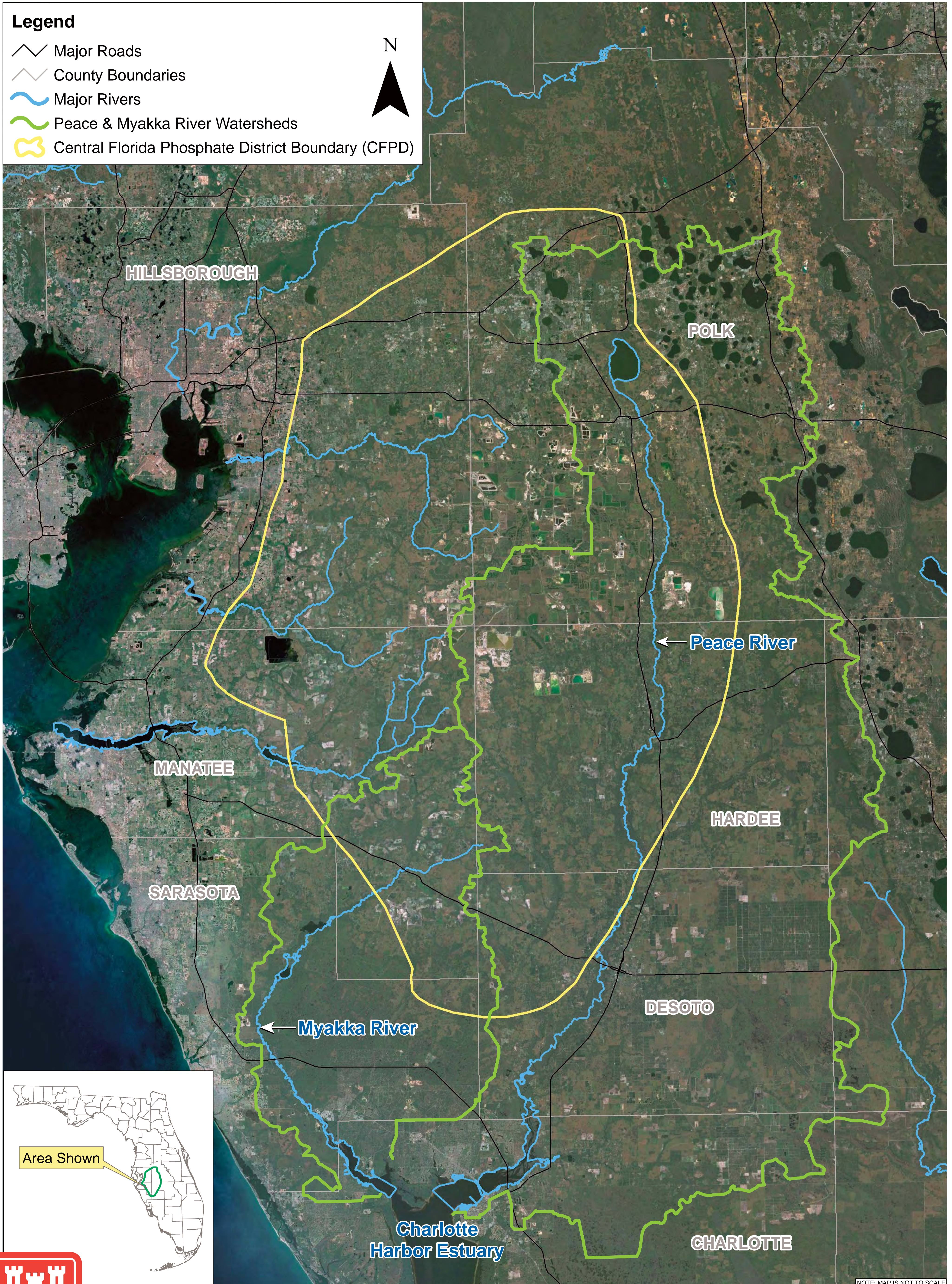
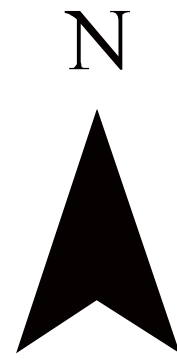
Source: 1000 Friends of Florida

 **DEVELOPED**  
 **CONSERVATION**

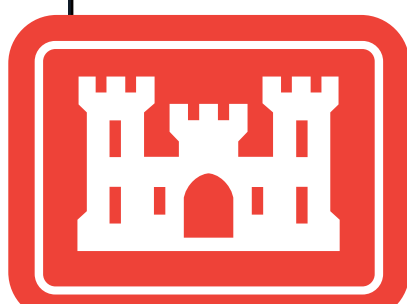
# Location of the Central Florida Phosphate District in Relation to the Peace and Myakka River Watersheds

## Legend

-  Major Roads
-  County Boundaries
-  Major Rivers
-  Peace & Myakka River Watersheds
-  Central Florida Phosphate District Boundary (CFPD)



NOTE: MAP IS NOT TO SCALE



US Army Corps of Engineers  
**BUILDING STRONG**

Areawide Environmental Impact Statement for Continued  
Phosphate Mining in the Central Florida Phosphate District

**CH2MHILL.**